

# Maintenance guide for the ILS22G

A how-to with pictures

By:	Richard Hazenberg, ILS
Date:	16 October 2009
Contact:	<a href="mailto:Richard.hazenberg@intelligentlecterns.com">Richard.hazenberg@intelligentlecterns.com</a>

### Step 1: Unscrewing

Put the ILS22G on a table with the glass plate facing down. Remove the red marked screws around the black center of the ILS22G, these are 11 screws in total. The screws can be removed with a Torcs screwdriver or an Imbus key (European standard).



Figure 1. ILS22G on the table.

### Step 2: Opening up

Before the ILS22G can be opened first the plug of the controller board needs to be unplugged. This plug can be found on the front side of the machine.

After this the back plate slides of the machine to the front (one or two centimeters). The back plate now is free from the machine and can be tilted to the right side (due to cabling). See also figure 2, 3 & 4.



Figure 2. Controller plug.



Figure 3. Removing the back plate.

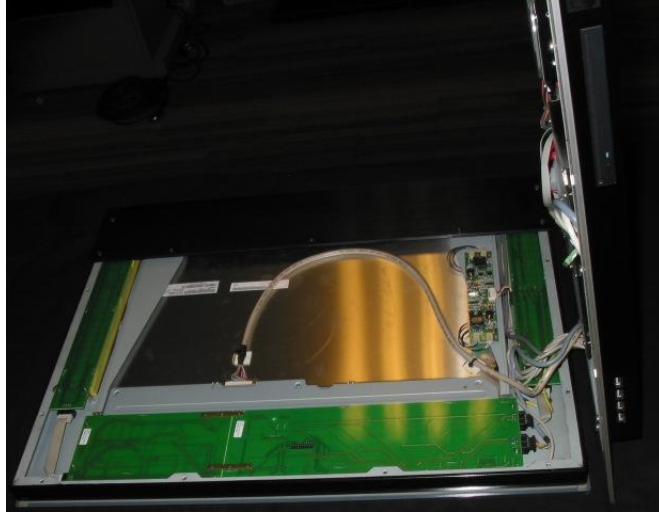


Figure 4. Tilting the backplate.

**Step 3:** Checking the wiring

Figure 5 shows the total wiring in the back plate of the ILS22G. The figure is divided in different sections to make give a better overview of the machine.

- Section 1: Motherboard
- Section 2: Power supply
- Section 3: Hard drive & optical drive
- Section 4: USB hub
- Section 5: Connectors

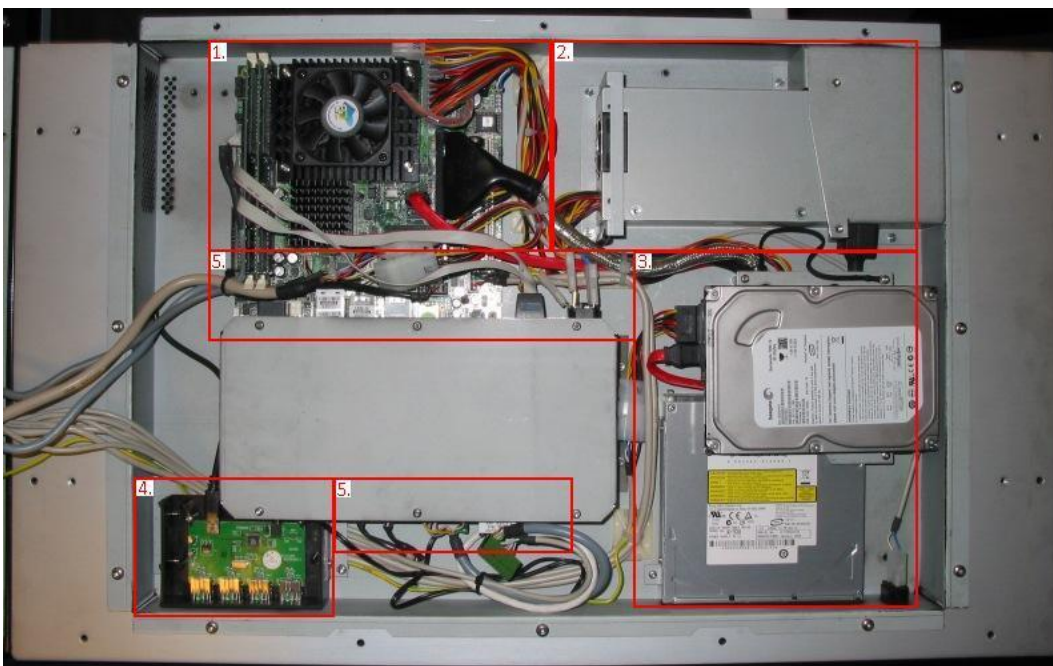


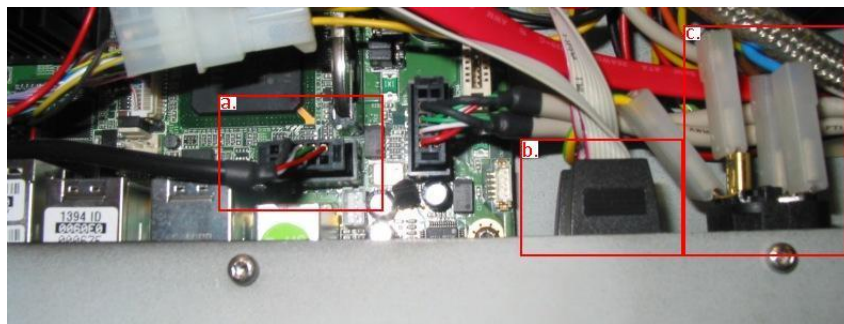
Figure 5. Wiring overview.

**Step 4a: Section 4**



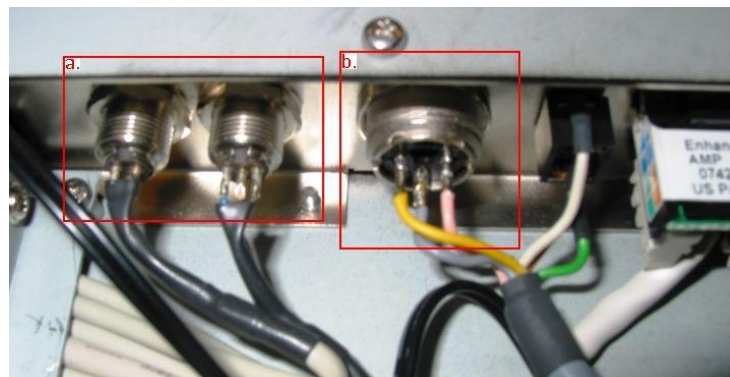
**Figure 6. USB hub.**

**Step 4b: Section 5**



**Figure 7. USB, power and serial connectors.**

- a. USB Hub connector
- b. Serial connectors
- c. Power connector



**Figure 8. Other connectors.**

- a. Microphone loop through connectors
- b. Pedestal DIN connector



**Step 5:** Checking the wiring of the screen and controller

Under the glass plate three controller boards, which take care of the lights under the glass plate, and the LCD screen with its LVDS connection. The three light controller connectors can come loose after transport and it is important to check the connections, see also figure 9 and 10.

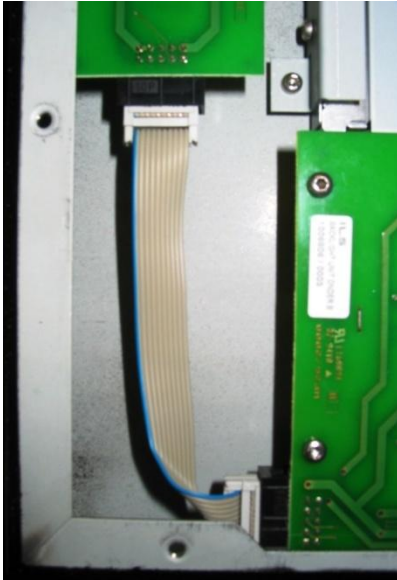


Figure 10. Left side connector light controller.

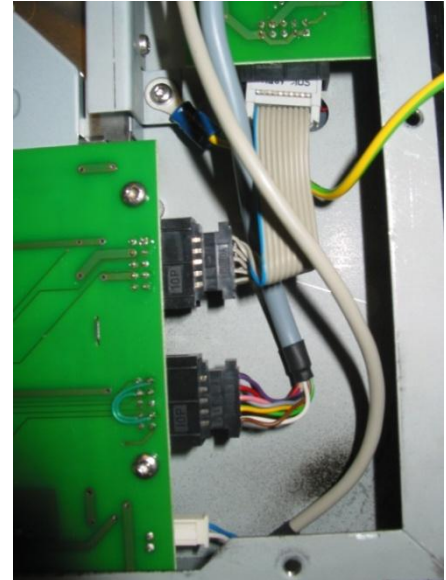


Figure 9. Right side connector light connector.

**Step 6:** Closing the machine

After checking all the wiring and connection in the machine it is important to close up the machine in such a way that the cabling does not get stuck. It is also important to connect the controller plug back on the backside of the glass plate, see also figure 2.

See figure 11 and 12 for how to close the machine. Figure 11 displays where is room for the cables when the machine closes up.

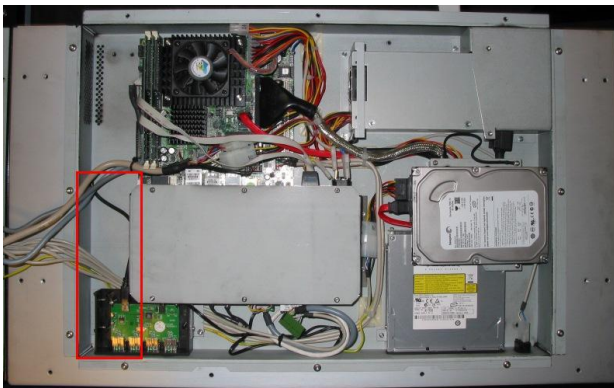


Figure 11. Space for the cables.



Figure 12. Closing the machine.